

## SUBARU WRX MUD FLAPS

# INSTALL INSTRUCTIONS

Subaru WRX 2022+ (VB)

## Introduction ///

The goal of AMS Performance is to provide the highest quality, best performing products available. By utilizing research and development, and rigorous testing programs AMS Performance will never compromise the quality or performance of our products. In addition, AMS Performance will only provide the finest customer service offering only parts and advice that are in the best interests of the customer. AMS Performance was built on a foundation of integrity. This is who we are. This is what you can count on.

A vehicle modified by the use of performance parts and tuning may not meet the legal requirements for use on public roads. AMS Performance makes no claims of compliance unless otherwise stated on a per-product basis. Use or installation of performance parts and tuning may adversely affect the drivability and reliability of your vehicle, and may also affect or eliminate your insurance coverage, factory warranty and new OEM part warranty. There is no stated or implied guarantee by AMS of continued OEM vehicle warranty, insurance coverage, or emissions compliance, due to the stress placed on your vehicle by performance parts and our inability to monitor its use, tuning or modification.

These instructions are not intended to be a comprehensive guide for installation as there are many variables that may affect your particular vehicle, including but not limited to model year differences, sub-model/trim/optional equipment differences, the presence of non-OEM parts, or other modifications that may have previously been completed. A basic understanding of automotive parts and systems and novice mechanical skills should be all that is necessary for installation, but certain circumstances may necessitate professional installation.

AMS Performance is committed to providing quality support for our products. If you are in need of technical support, installation help, or a replacement component, our Customer Service Team is available directly via telephone at 847-709-0530, or digitally via the contact form linked here: [amsperformance.com/support](https://amsperformance.com/support)

## Table of contents ///

2. Before You Begin
3. Rear Mud Flaps
6. Front Mud Flaps

## BEFORE YOU BEGIN **///**

Please be aware that the AMS Performance mud flaps will not fit with the optional factory splash guards, these will need to be removed in order to install the mud flaps. (Fig 1 & 2) These instructions include details on how to remove the splash guards. Also be aware that due to the matte finish on the mud flaps, contact with oil may smudge the mud flaps. It is advisable to wear gloves during this install. In the event of smudges, use soapy water to clean the mud flaps.



Figure 1



Figure 2



## REAR MUD FLAPS **///**

1. Raise the car and remove all 4 wheels. Remove the 4 fasteners circled below. (Fig. 3 & 4) (If equipped, remove the splash guards by using a pry tool since they are attached with strong adhesive. They will not be reinstalled, so be sure to remove any remaining adhesive residue.) (Fig. 5)



Figure 3



Figure 4





Figure 5

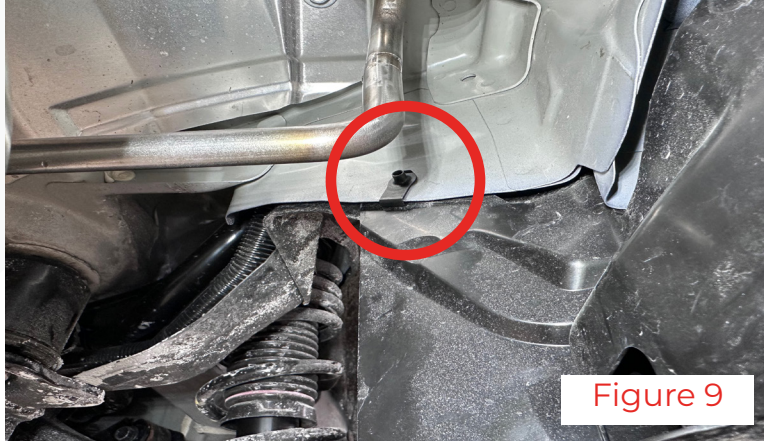
2. With the fasteners removed, set out the rear mud flap and hardware shown below. (Fig 6)



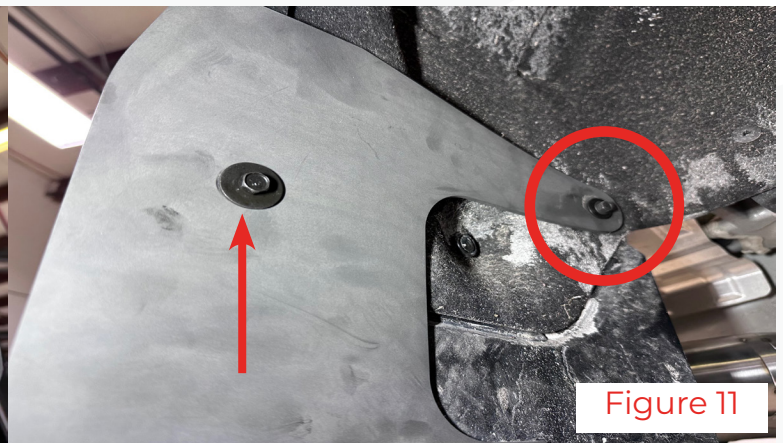
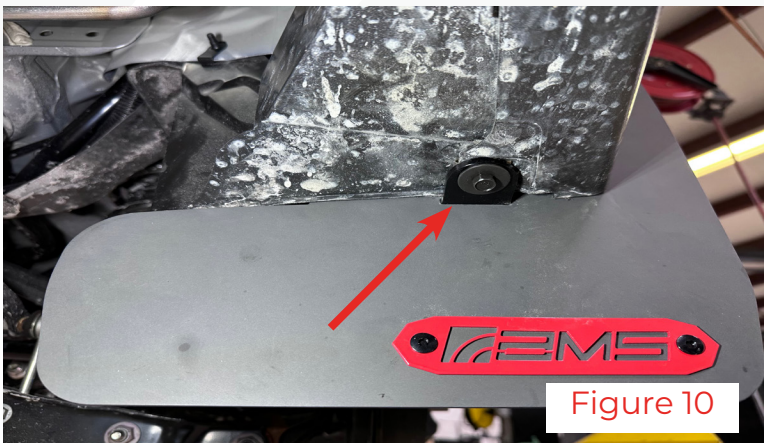
Figure 6



3. Take the 3 clip nuts and install them in the pictured locations (Fig 7, 8 & 9) Be sure that the clip in (Fig 7) is installed on the metal and not on the plastic trim. The smallest clip will install in the top location (Fig 9).



4. Install the 2 M6 screws indicated by the arrows in the bottom and outer locations (Fig 10 & 11). For the inner location, use the M5 screw with the supplied washer, circled in red (Fig 11). Repeat this process for the other side.





## FRONT MUD FLAPS **///**

5. Remove the 4 circled fasteners. (Fig. 12 & 14) (If equipped, remove the splash guards by using a pry tool since they are attached with strong adhesive, they will not be reinstalled, so be sure to remove any remaining adhesive residue.)(Fig. 15) Also remove the factory nut clip if present (vehicles equipped with factory splash guards). (Fig 13)



Figure 12



Figure 13





6. With the fasteners removed, set out the front mud flaps and hardware. (Fig. 16)





7. Install the provided nut clips in the following locations. (Fig. 17, 18 & 19)



Figure 17

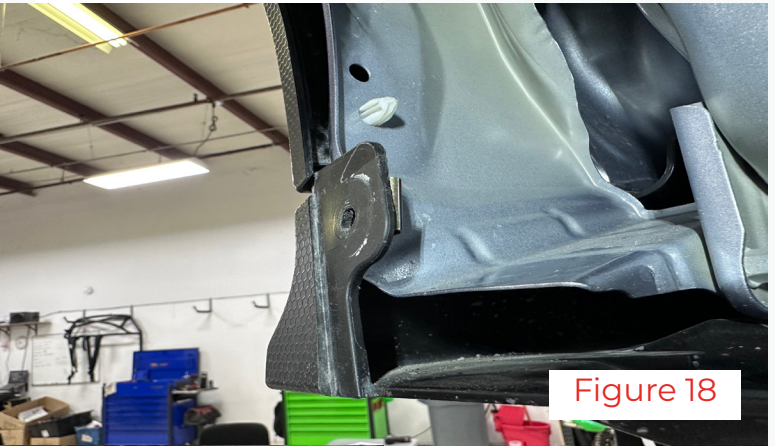


Figure 18



Figure 19



8. Install the mud flap using the 3 provided screws. (Fig. 20) Use the provided spacer for the bottom inner mounting point, it will install on the back of the mud flap between the car and the mud flap. (Fig. 21). Repeat this process for the other side.

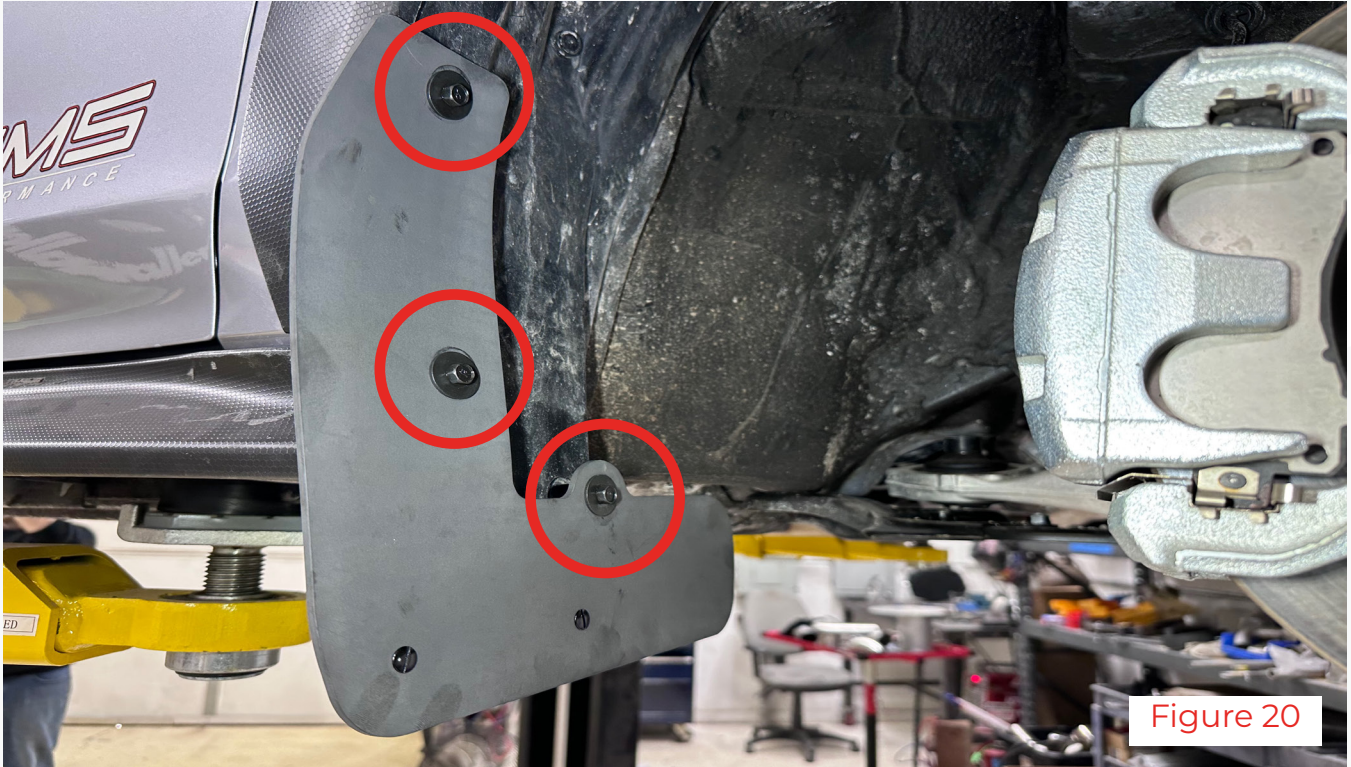


Figure 20



Figure 21

9. The mounting holes on the mud flaps are intentionally oversized to accommodate for variation and provide room for final adjustments. Slightly loosen the screws, adjust mud flaps until parallel with the ground, and tighten when satisfied.

This completes the install. Enjoy your new AMS Performance WRX mud flaps!