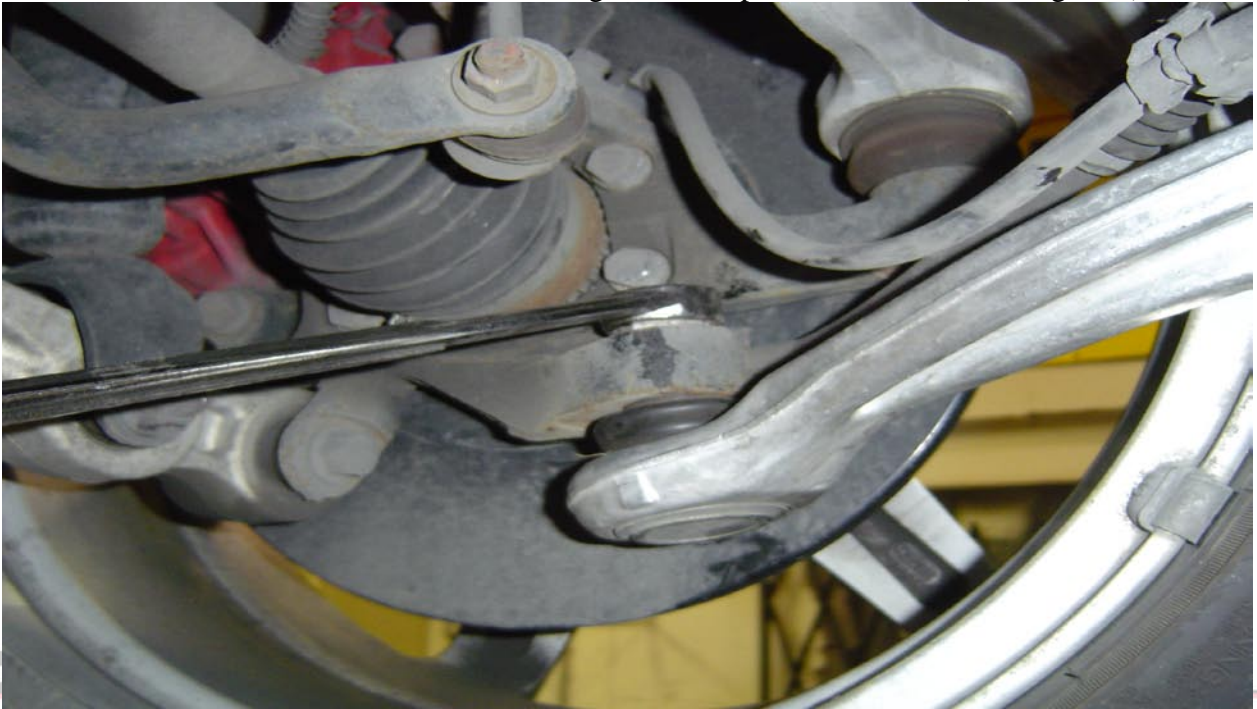


1. Jack up the rear of the car. Use jack stands for support.
2. Remove the nut on the Ball Joint Using a 22mm open end wrench. (See Figure 1)



3. Remove 12mm bolt that is holding wire brackets on control arm.(See Figure 2)



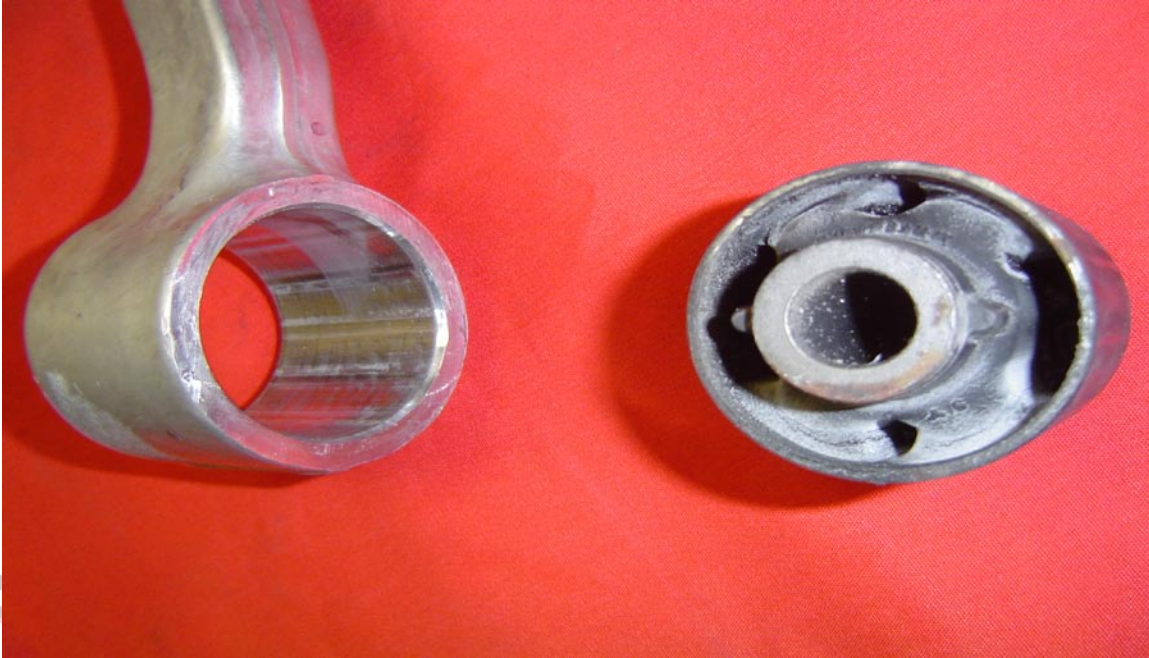
4. Remove 19mm bolt on the front of the control arm.(See Figure 3)



5. Use a hammer to gently tap the steel knuckle to break free the lower ball joint.(See Figure 4)



6. Remove Complete Control arm assembly.
7. Remove the rubber insulators from the front bushings.
8. Using a press or air hammer remove the complete rubber busing including outer sleeve. (See Figure 5)



9. Coat the outside of the Delrin Bushing with lubricant (i.e. white grease, petroleum jelly. Wheel bearing grease)

10. Gently tap the Delrin Bushings into the control arm then lube the steel sleeve and gently tap it in. (See Figure 6)



11. Reinstall the control arm.
12. Make sure all bolts are tightened before driving.

**** TIP ****

You may need to apply upwards pressure to the control arm when tightening the 22mm nut to prevent the stud from spinning.